

# Tigra

38m Luxury Sailing Yacht

Charter & Broker  
**FORZATRE®**

E-brochure



# Tigra

Charter & Broker  
**FORZATRE®**

Sailing View





# Tigra

Charter & Broker  
**FORZATRE®**

Exterior View



# Tigra

Charter & Broker  
**FORZATRE®**

Exterior View





# Tigra

Charter & Broker  
**FORZATRE®**

Exterior View





# Tigra

Charter & Broker  
**FORZATRE**

Exterior View





# Tigra

Charter & Broker  
**FORZATRE®**

Aerial View





# Tigra

Charter & Broker  
**FORZATRE**

Fore Deck





# Tigra

Charter & Broker  
**FORZATRE**

Aft Deck





# Tigra

Charter & Broker  
**FORZATRE®**

Aft Deck





# Tigra

Charter & Broker  
**FORZATRE®**

Saloon





# Tigra

Charter & Broker  
**FORZATRE®**

Saloon





# Tigra

Charter & Broker  
**FORZATRE**

Saloon

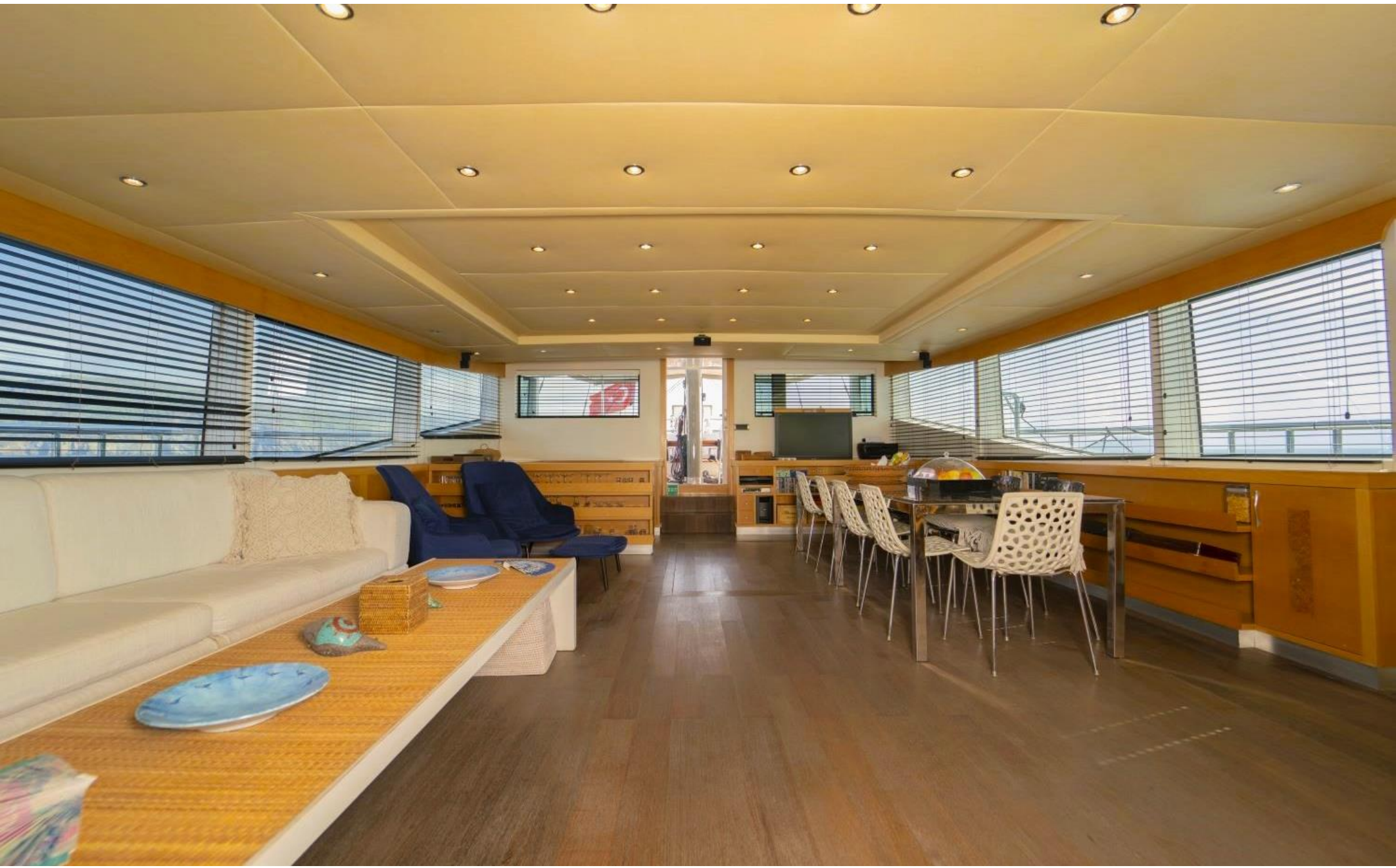




# Tigra

Charter & Broker  
**FORZATRE®**

Saloon





# Tigra

Charter & Broker  
**FORZATRE®**

Master Cabin





# Tigra

Charter & Broker  
**FORZATRE®**

Master Cabin





# Tigra

Charter & Broker  
**FORZATRE**

Master Cabin





# Tigra

Charter & Broker  
**FORZATRE®**

Master Cabin Bathroom





# Tigra

Charter & Broker  
**FORZATRE®**

Lower Deck Corridor





# Tigra

Charter & Broker  
**FORZATRE**

VIP Cabin





# Tigra

Charter & Broker  
**FORZATRE**

VIP Cabin Bathroom





# Tigra

Charter & Broker  
**FORZATRE**

Double Cabin





# Tigra

Charter & Broker  
**FORZATRE**

Double Cabin





# Tigra

Charter & Broker  
**FORZATRE**

Double Cabin Bathroom





# Tigra

Charter & Broker  
**FORZATRE®**

Twin Cabin





# Tigra

Charter & Broker  
**FORZATRE**

Twin Cabin Bathroom





# Tigra

Charter & Broker  
**FORZATRE**





# Tigra

## 38m Luxury Sailing Yacht

### Main Characteristics

Type: Sailing Yacht - Ketch

Length: 38.00m

Beam: 8.20m

Draft: 3.80m

Built/ Refit: 2008 / 2020

Builder: Mastori Yachts – Bodrum

Hull: Steel

Engines: 2 x 440HP MAN

Cruising / Max. speed: 10 knots / 12 knots

Generators: 2 x 33Kw Kohler

Crew: 5

### Accommodation

**10** guests in **5** cabins

1 Master, 1 VIP, 1 Double, 2 Twin

### Key Features

Refit in 2020

Steel hull

Ken Freivokh Design

Modern and stylish interior

Comfortable and spacious guest cabins

Large deck space

Hydraulic lifting swim platform

Great sailing performance

Professional and friendly crew service

### Entertainment

Wi-fi internet

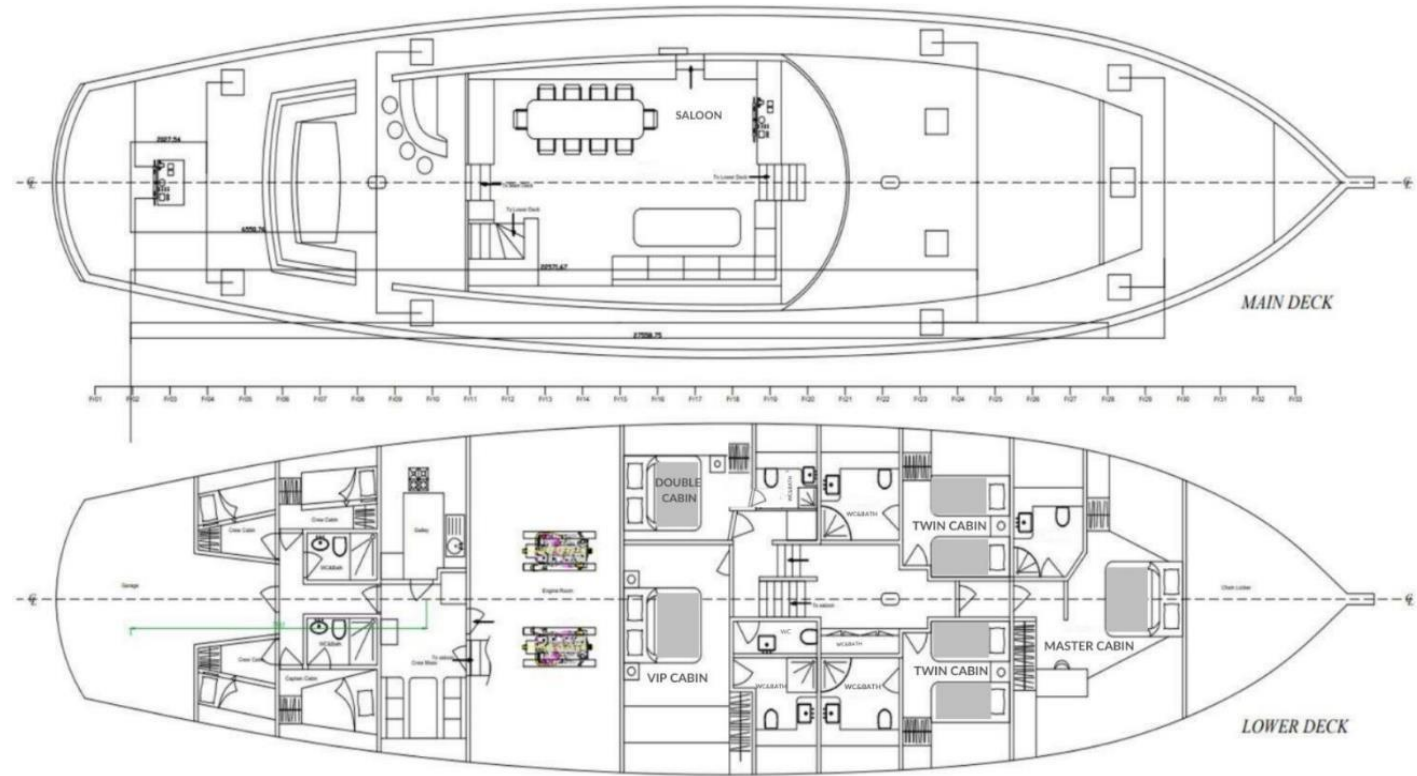
Satellite TV

LCD TVs and DVDs

Bose sound system

Board games

Charter & Broker  
**FORZATRE®**



### Water Toys

Sea Kayak

Water-skis

Wakeboard

Donut / Ringo

Stand-up Paddleboard

Fishing & Snorkeling gear

### Tender

1 x 5.50m Joker rib tender with outboard 100HP